

Timings of School Day:

Primary 8:40am - 2:15pm

Secondary 8:40am—2:10pm



Mo Mowlam
Academy

“AIM HIGH AND THRIVE”

Mo Mowlam Academy

Newsletter — Spring HT 1 2021

PRINCIPAL'S MESSAGE

I would like to say how incredibly proud I am of all of our young people, families and staff for the resilience they continue to show through these challenging times. I have been very pleased with the take up of lateral flow testing by secondary students on their return to school - they have engaged with the rigorous process calmly and with dignity.



I am also grateful to all of the staff who have participated in the weekly testing in order to keep all members of the school community safe. When we have been notified of a positive case of Covid 19 we have taken swift action to isolate close contacts. Following this, none of the close contacts reported symptoms or positive Covid tests, which should offer assurances that our efforts to prevent the transmission of Covid 19 in school are successful.

There are a small number of young people who are not attending on site provision currently. Staff will continue to make regular contact with these families after half term, and will begin to make plans and set timescales for their return, subject to updated information from the government. We keenly await the 8th March when we can hopefully begin to bring these young people back on site with confidence in the national efforts to lower the rates of transmission.

Staff have been lucky enough to enjoy some Covid secure visits to the new building, which is very close to completion. We are still awaiting confirmation of the final sign off and hand over of the building, and as soon as we can confirm the moving date we will!

Currently we are planning to have PD days on Friday 12th February and Monday 22nd February to move all equipment and furniture and ensure the building is ready to welcome those young people who are attending on the 23rd February. We will put plans in place to prepare those young people who have opted not to come into school at this present time for their eventual return, recognising that they may be returning to a new building with a new route of travel into school. If we are unable to move on these dates, the PD days will be cancelled. We will notify you no later than 10th February if this is the case.

Once we have a confirmed moving date, we will also confirm the arrangements and menus for school meals, which will be prepared and served on site. We will also have the appropriate spaces for these to be eaten in central areas, but will need to timetable these areas to limit contacts whilst the Covid 19 risk levels are high.

We have purchased some PE T shirts with the Mo Mowlam logo for secondary students. Secondary students will be expected to bring black shorts / tracksuit bottoms and trainers on PE days. Further information on this will be provided once we move. Primary students will continue to use their existing PE kits.

I would like to wish you all a very safe half term. Please contact the school by email: momowlam@horizonstrust.org.uk if your child develops symptoms / tests positive for Covid on or before Sunday 14th February, so that we can make contact with any staff members or young people who may have to isolate as a result. Please note, as staff will be working from home over the half term, these calls may come from a withheld number. If your child, or a close contact of your child, tests positive for Covid 19 after this date, please notify us by e mail so that we are aware of their isolation period and can provide appropriate welfare calls / remote learning activities.

Once again, thank you for your continued support and the kind messages parents are giving to our staff members, we really do appreciate it!

IMPORTANT DATES

UPCOMING HOLIDAYS:

- We break up for February half term on Friday 12th February 2021 for one week and pupils return to school on Monday 22nd February 2021 (dependant on move to new school building)
- We break up for Easter on Friday 26th March 2021 for two weeks and return on Monday 12th April 2021
- May half term is from Monday 31st May 2021 to Friday 4th June 2021
- We break up for the summer holidays on Friday 16th July 2021 and the pupils return on Thursday 2nd September 2021.

OTHER EVENTS:

- We have 2 PD days scheduled (dates to be confirmed but likely to be Friday 12th February 2021 and Monday 22nd February 2021) around the move to the new school building. We will be in touch as soon as possible to inform parents/carers once these have been confirmed.
- Our remaining 2 PD days are on Monday 19th July 2021 and Tuesday 20th July 2021.



We are really pleased to have three new staff members join our team.

Welcome to:

Miss Walton

Mr Dobson

Miss Lillie

SOCIAL MEDIA



Don't forget to keep an eye on the school Facebook Page and Twitter account. They are both updated regularly with school news!!

ATTENDANCE

Thank you to all parents/carers who support the school by ensuring good attendance. **Sapphire** class are the top attendees for this half term. Congratulations to everyone in Sapphire Class!!!



We also have a number of pupils who have achieved 100% attendance this half term: Jayden Evans; Kai Fryett; Kenzie Randall; Ryan Jones & Kieran Whitehead —a huge well done to you all!!!

Just a reminder that if your child is going to be absent please call the school office on 01642 779292 and select option 1.

DINNER MONEY

Just a reminder that school dinner money needs to be paid to the school office promptly. Primary Pupil Meals are £2.05 per day. Secondary Pupil Meals are £2.20 per day.



PE UNIFORM

In our new building, there will be male and female changing rooms for PE. We will introduce a uniform PE kit for all students at this point. Primary will continue to wear black shorts / tracksuit bottoms with a white T shirt, and a change of appropriate footwear (Trainers / Plimsoles). Secondary students will need black shorts / tracksuit bottoms and a change of footwear, but will be provided with a navy blue round neck T shirt with the Mo Mowlam logo.



SCHOOL UNIFORM

We would like to thank all parents/carers for their continued support with school uniform. We now have the majority of pupils wearing uniform every day. Please remember that if you would like to order any extra items of uniform for your child then please just give the school office a call.

Our uniform comprises of:

- Light blue Polo Shirt or Short-Sleeved Shirt
- Navy Blue Sweatshirt or Cardigan or Blazer
- Grey School Trousers / Skirt
- Navy Blue Tie
- Black School Shoes



Ruby and Emerald Class News!!

English



This half term we have been looking at Shakespeare and finding out more information about him and his life. We have made Masquerade Masks and Quills and looked at some of his most famous plays. We have also been working on our writing skills and have written some fantastic stories about a shipwreck like Shakespeare did in his play 'The Tempest'.

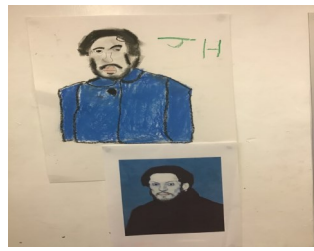


Maths

For part of our work this half term we have been working on measurements. We have been working on Area and Perimeter and the pupils had great fun measuring things in the classroom to find their perimeter. Well done everyone!

Art

The pupils have been working on Portraits for Art and have recreated iconic portraits in the style of particular artists. The pupils have been looking at the styles of Pablo Picasso and Julian Opie.



Cooking

During the Food Technology lessons the pupils have been finding out about healthy eating and have been making some delicious Fruit salads and sorbets and have been finding out about what health benefits you can gain from different fruits.



Amethyst Class News!!

Amethyst have enjoyed learning about different materials and their properties. We have worked well to plan and carry out experiments to test the best materials for food packaging. We had a great time conducting a fair test, investigating the strongest type of paper!

